

Facing cancer takes **GUTS**

Gastrointestinal symptoms are some of the many consequences of **cancer treatment** and are linked to:

- ⊗ Poorer treatment tolerance¹
- ⊗ Worse clinical outcomes¹
- ⊗ Lower quality of life¹

To help shine a light on this issue

In 2023, Nestlé Health Science conducted a **survey² of HCPs**

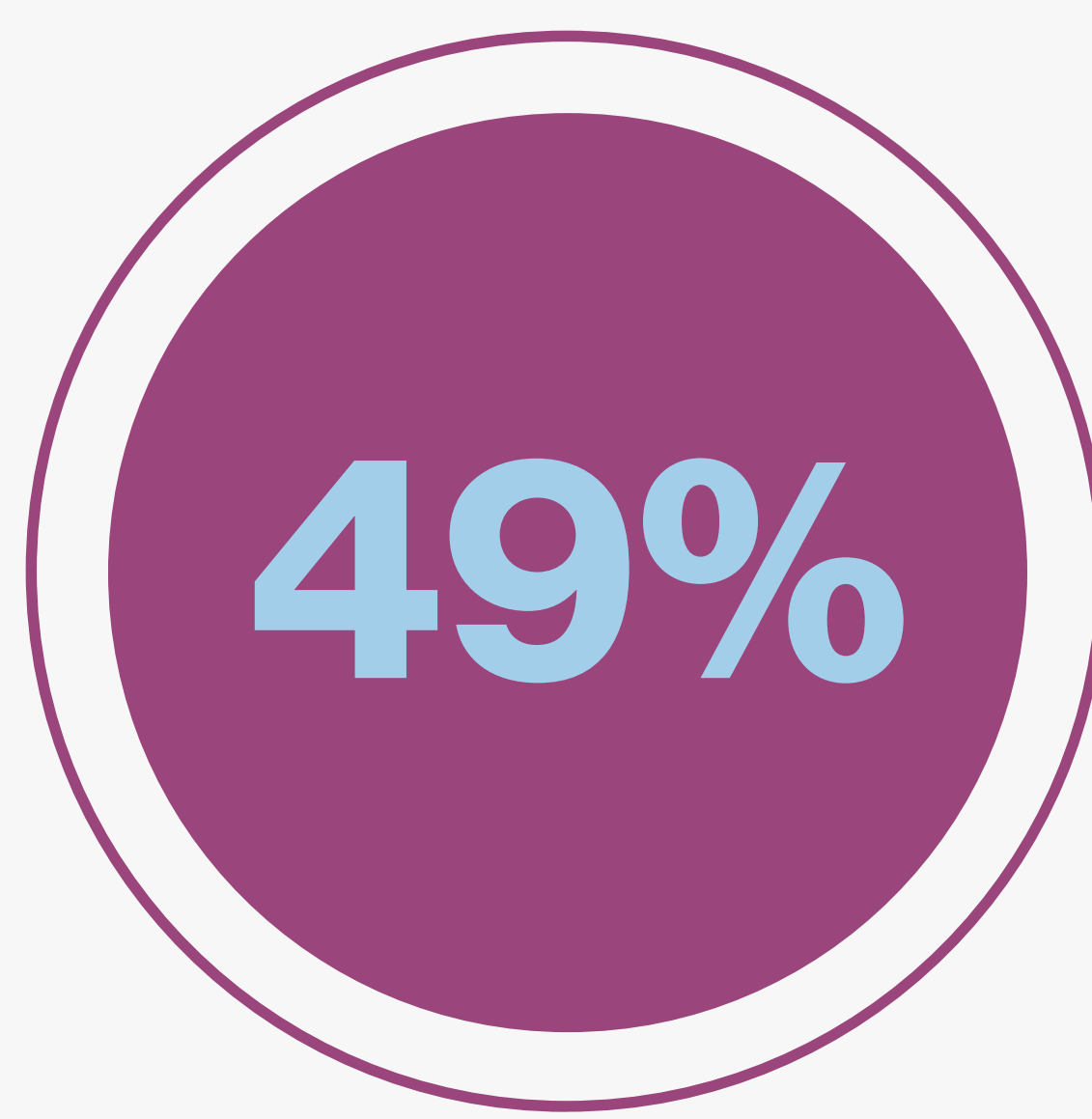
In total, **59 responses** were received and the **survey** showed

How commonly do your oncology patients experience malabsorption or maldigestion with their oral intake?



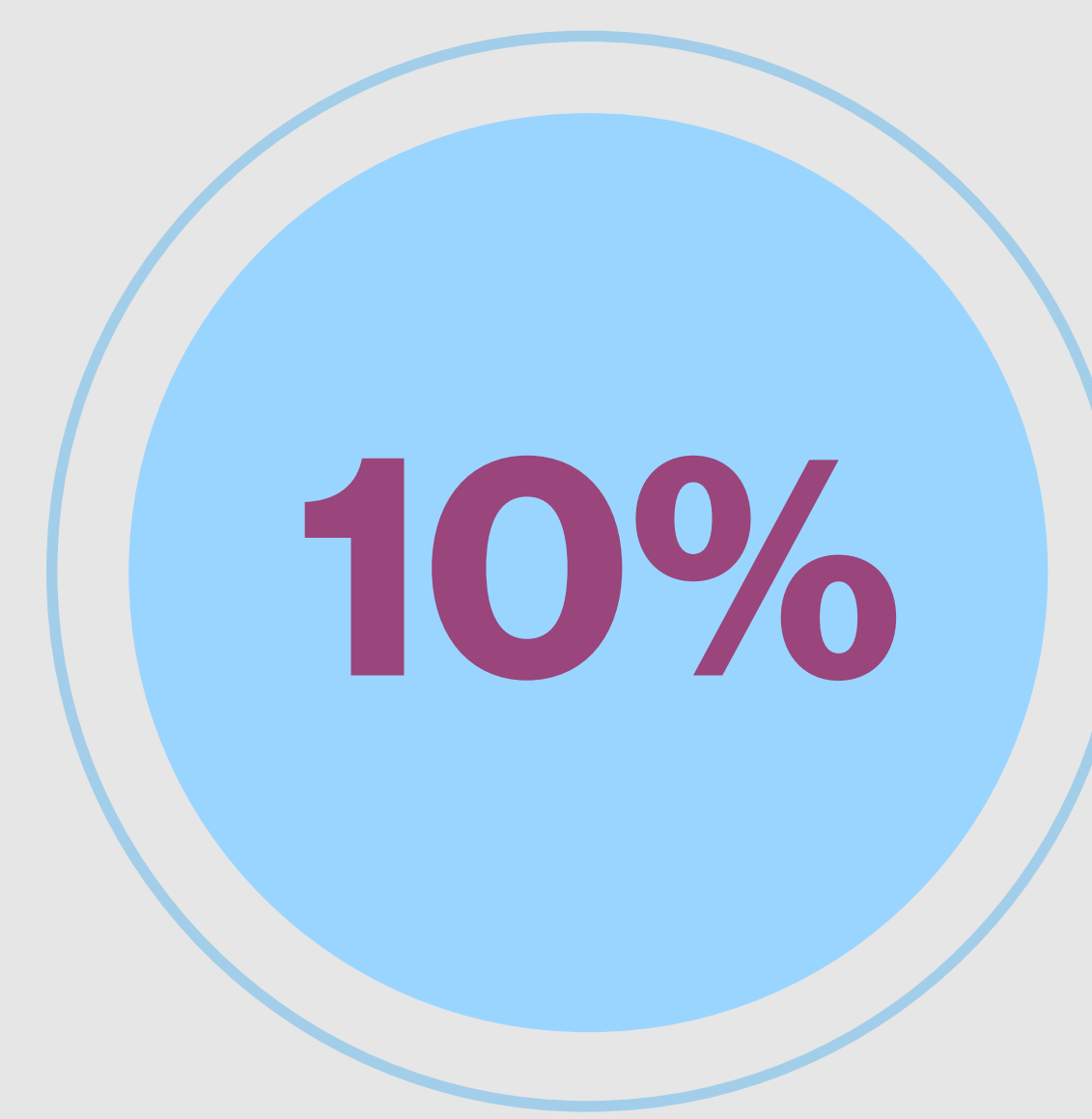
of respondents described symptoms as occurring **'frequently' or 'very frequently'**.

How frequently do your enterally-fed oncology patients experience gastrointestinal symptoms?



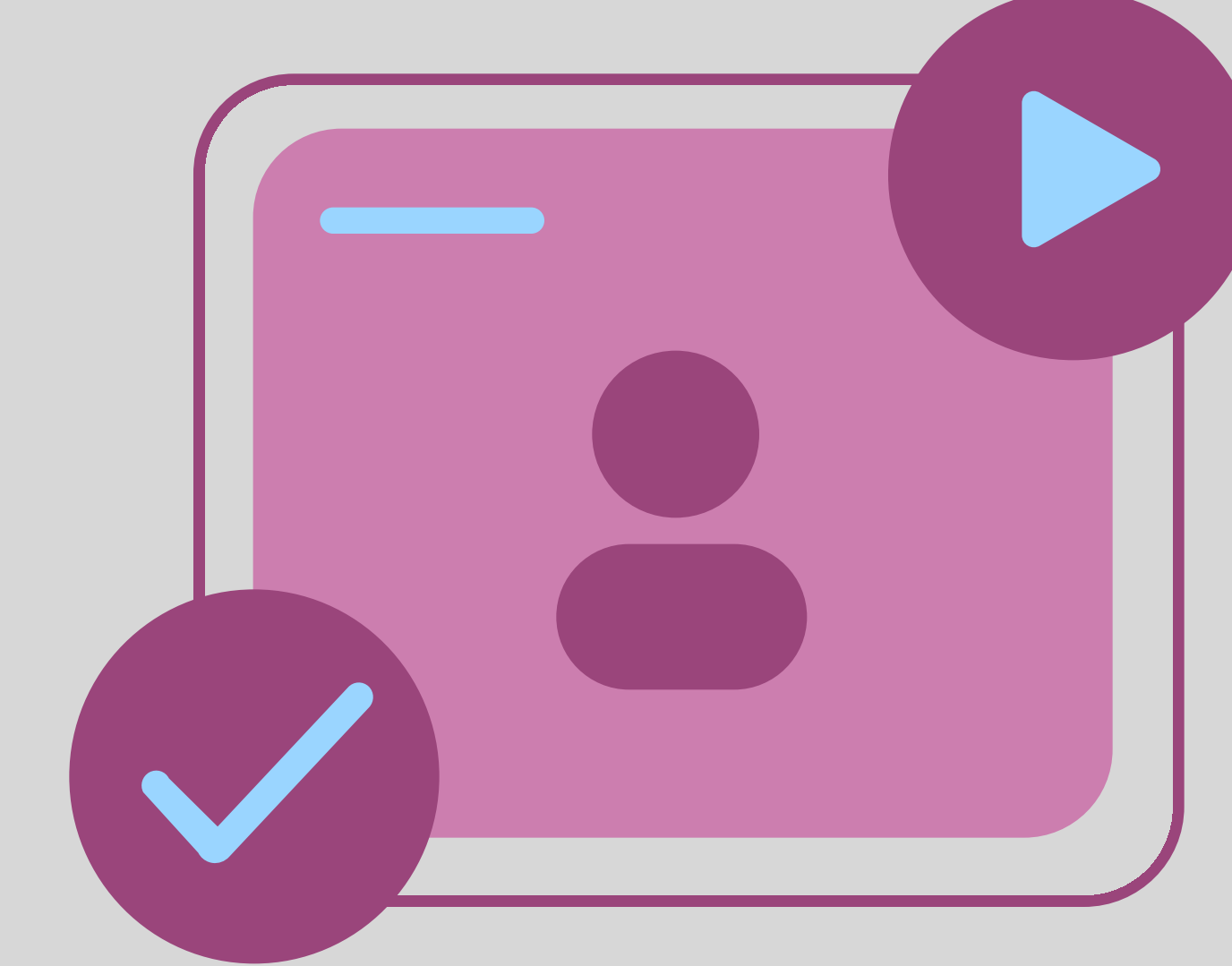
of respondents described symptoms as occurring **'frequently' or 'very frequently'**.

How confident do you feel in the management of these symptoms when they arise?

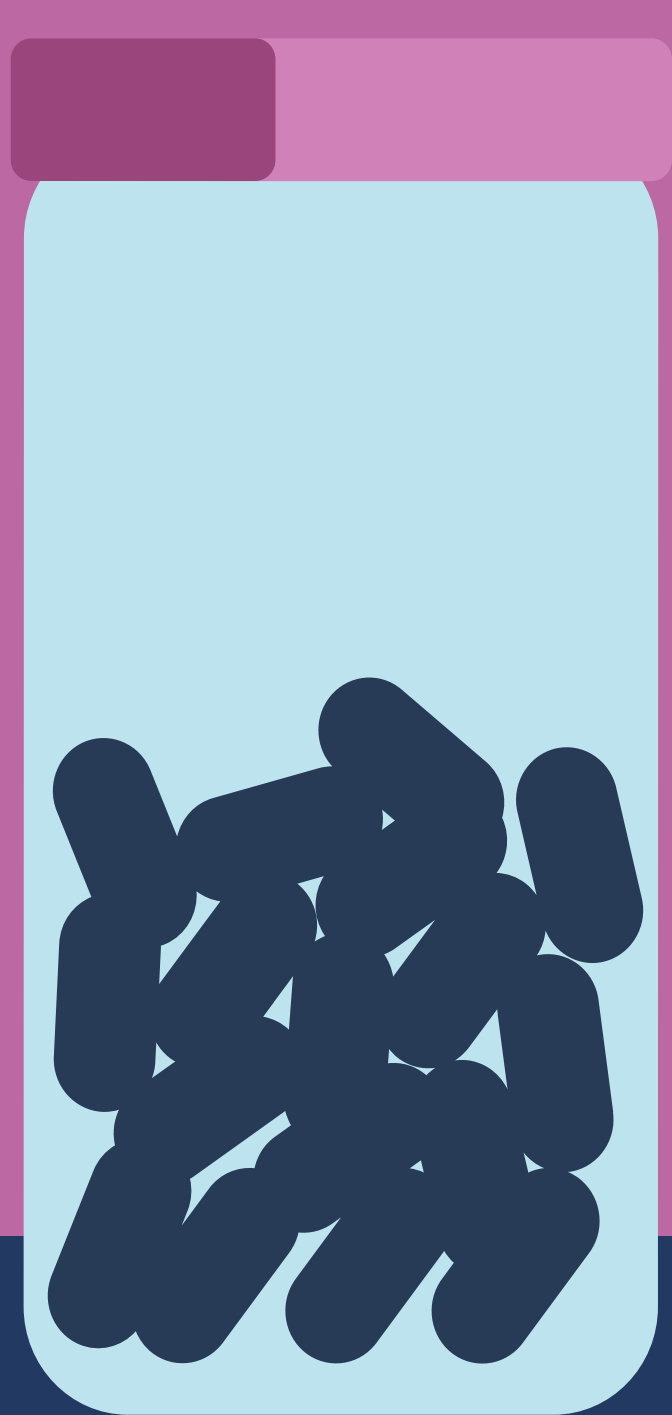


rated their confidence level **as 5/5.**

What solutions and services do you feel would help support your practice in this area?



Digital education resources, webinars and best practice guidelines were the most frequently selected options.



We're on a mission to **support HCPs** to increase their knowledge and confidence in this important area of practice.

Facing cancer takes **GUTS**

Stay tuned for the next chapter in our journey.

References

1. O'Reilly M, Mellotte G, Ryan B, O'Connor A. Gastrointestinal side effects of cancer treatments. Ther Adv Chronic Dis. 2020; 11: 2040622320970354.
2. Nestlé Health Science Dietitians Research Survey. Data on file. February 2023.